

Flygt 3090

3090.170/.890

Table of Contents

1 Introduction.....	2
1.1 Specially approved products.....	2
2 Product Description.....	3
2.1 The data plate.....	3
2.2 Approvals.....	3
2.3 Product denomination.....	5
3 Exploded View.....	7
3.1 Drive Unit.....	7
3.1.1 Standard and explosion-proof.....	7
3.2 Hydraulic Unit.....	8
3.2.1 M_HT.....	8
3.3 Installation Components.....	10
3.3.1 MP.....	10
4 List of Parts.....	11
4.1 3090.170/.890.....	11

1 Introduction

Purpose of this manual

The purpose of this manual is to provide necessary information on spare parts and accessories order.

Disclaimer

Always use genuine Flygt parts. The use of other spare parts or accessories can invalidate any claims for warranty or compensation. Xylem does not take any responsibility for damages that are caused by the use of non-original parts. For more information, contact your local sales and service representative.

Data for ordering spare parts

The following information is needed for spare part orders:

- Serial number of the product
- Part number
- Quantity of bulk material, see * in tables

1.1 Specially approved products

Qualification of personnel

Only Xylem or Xylem-authorized service personnel may undertake repair work on specially approved products.

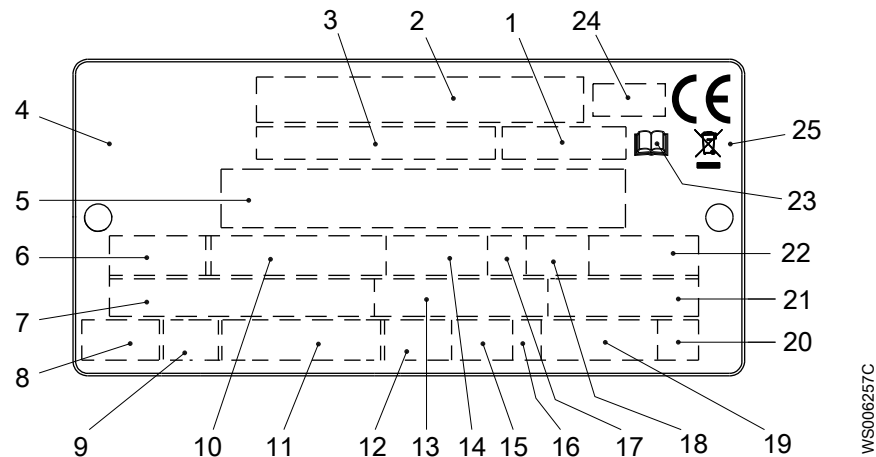
Dimensional accuracy inspection

Spare parts marked with (Ex) after the part number are subject to dimensional accuracy inspection when used in specially approved products.

2 Product Description

2.1 The data plate

The data plate is a metal label that is located on the main body of the products. The data plate lists key product specifications. Specially approved products also have an approval plate.




1. Curve code or Propeller code
2. Serial number
3. Product number
4. Country of origin
5. Additional information
6. Phase; type of current; frequency
7. Rated voltage
8. Thermal protection
9. Thermal class
10. Rated shaft power
11. International standard
12. Degree of protection
13. Rated current
14. Rated speed
15. Maximum submergence
16. Direction of rotation: L=left, R=right
17. Duty class
18. Duty factor
19. Product weight
20. Locked rotor code letter
21. Power factor
22. Maximum ambient temperature
23. Read installation manual
24. Notified body, only for EN-approved Ex products
25. WEEE-Directive symbol

Figure 1: The data plate

2.2 Approvals

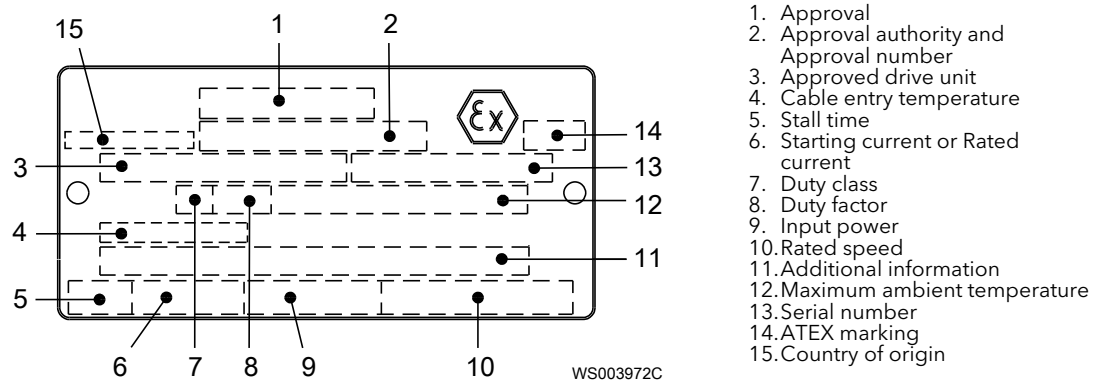
Product approvals for hazardous locations

Pump	Approval
3090.890	European Norm (EN) <ul style="list-style-type: none"> • ATEX Directive • EN 60079-0:2012/A11:2013, EN 60079-1:2014, EN ISO 80079-36:2016, EN ISO 80079-37:2016 •  II 2 G Ex db h IIB T3 Gb

Pump	Approval
	IEC <ul style="list-style-type: none"> • IECEx scheme • IEC 60079-0:2011, IEC 60079-1:2014; IEC 80079-36:2016; IEC 80079-37:2016 • Ex db h IIB T3 Gb
	FM (FM Approvals) <ul style="list-style-type: none"> • Explosion proof for use in Class I, Div. 1, Group C and D • Dust ignition proof for use in Class II, Div. 1, Group E, F and G • Suitable for use in Class III, Div. 1, Hazardous Locations
	CSA Ex <ul style="list-style-type: none"> • Explosion proof for use in Class I, Div. 1, Group C and D

EN approval plate

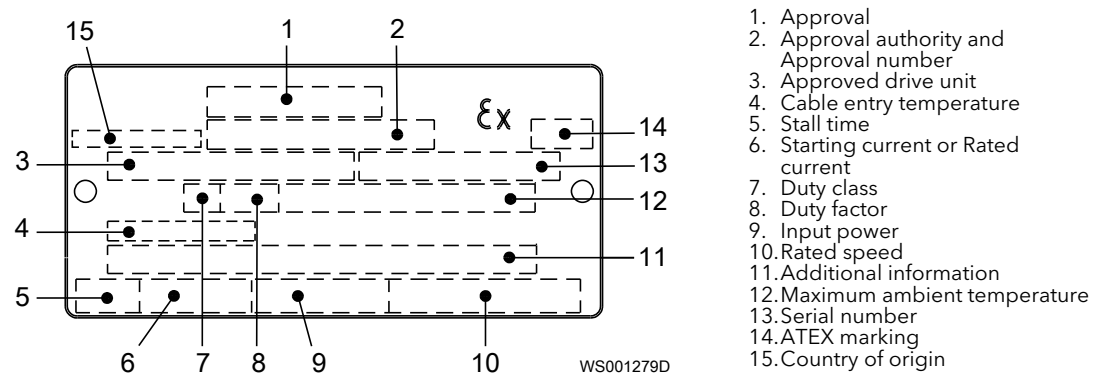
This illustration describes the EN approval plate and the information that is contained in its fields.



IEC approval plate

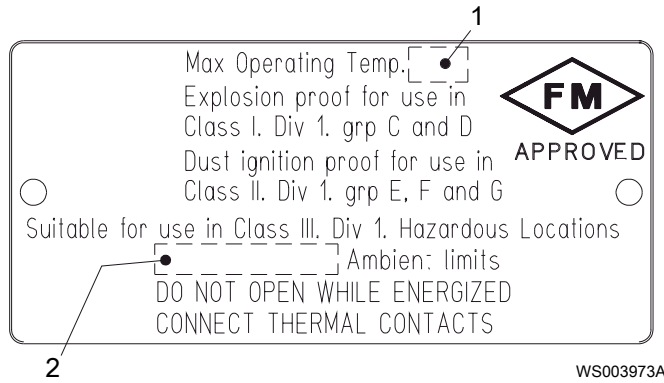
This illustration describes the IEC approval plate and the information that is contained in its fields.

International Norm; not for EU member countries.



FM approval plate

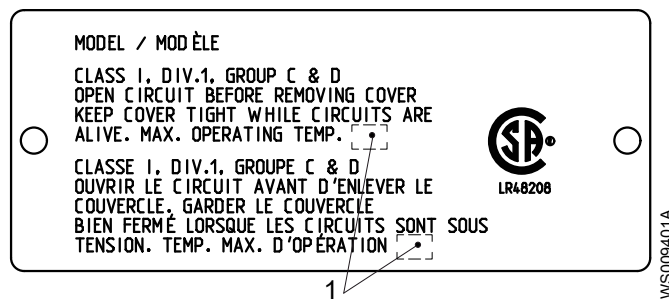
This illustration describes the FM approval plate and the information that is contained in its fields.



- 1. Temperature class
- 2. Maximum ambient temperature

CSA approval plate

This illustration describes the CSA approval plate and the information that is contained in its fields.



- 1. Temperature class

2.3 Product denomination

Reading instruction

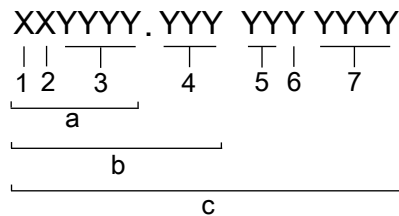
In this section, code characters are illustrated accordingly:

X = letter

Y = digit

The different types of codes are marked up with a, b and c. Code parameters are marked up with numbers.

Codes and parameters



WS006265B

Type of Callout	Number	Indication
Type of code	a	Sales denomination
	b	Product code
	c	Serial number
Parameter	1	Hydraulic end
	2	Type of installation
	3	Sales code
	4	Version
	5	Production year

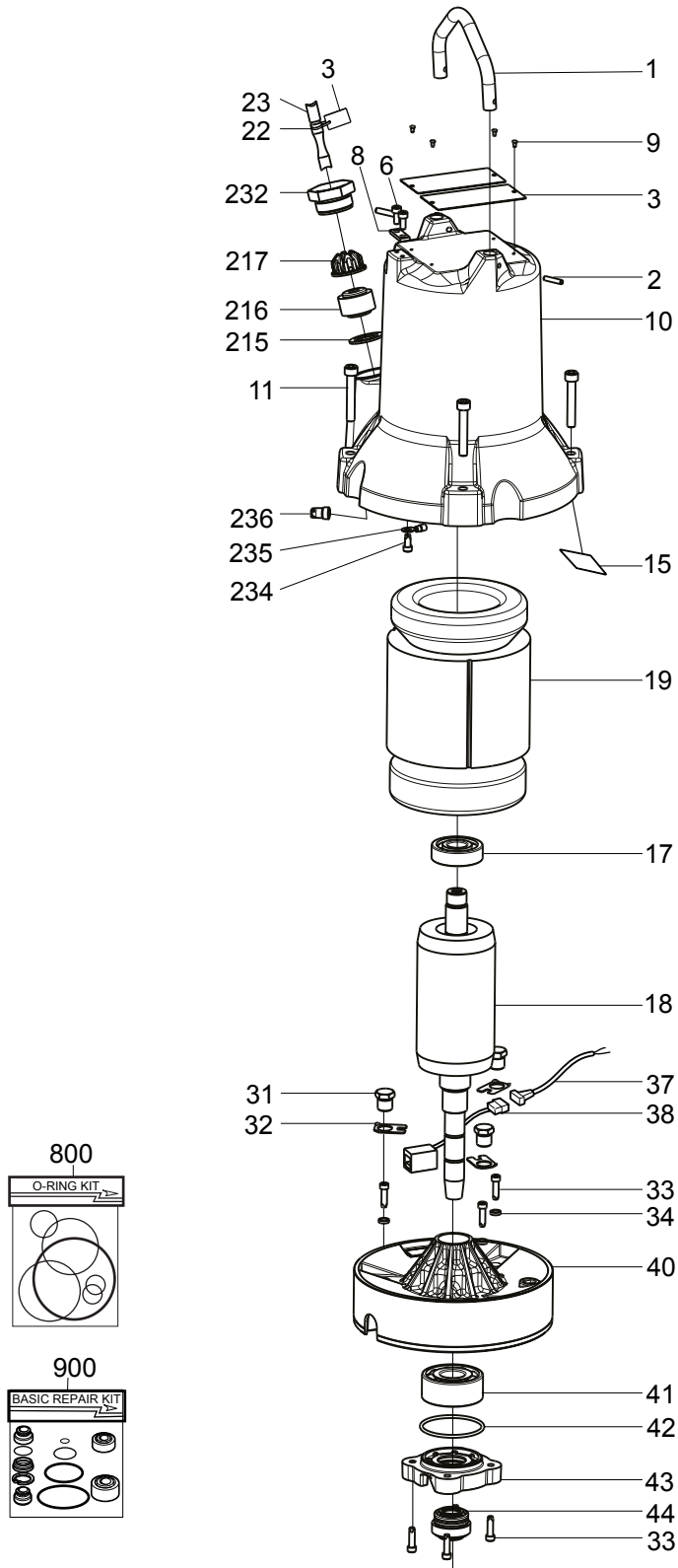
Type of Callout	Number	Indication
	6	Production cycle
	7	Running number

3 Exploded View

3.1 Drive Unit

3.1.1 Standard and explosion-proof

3090

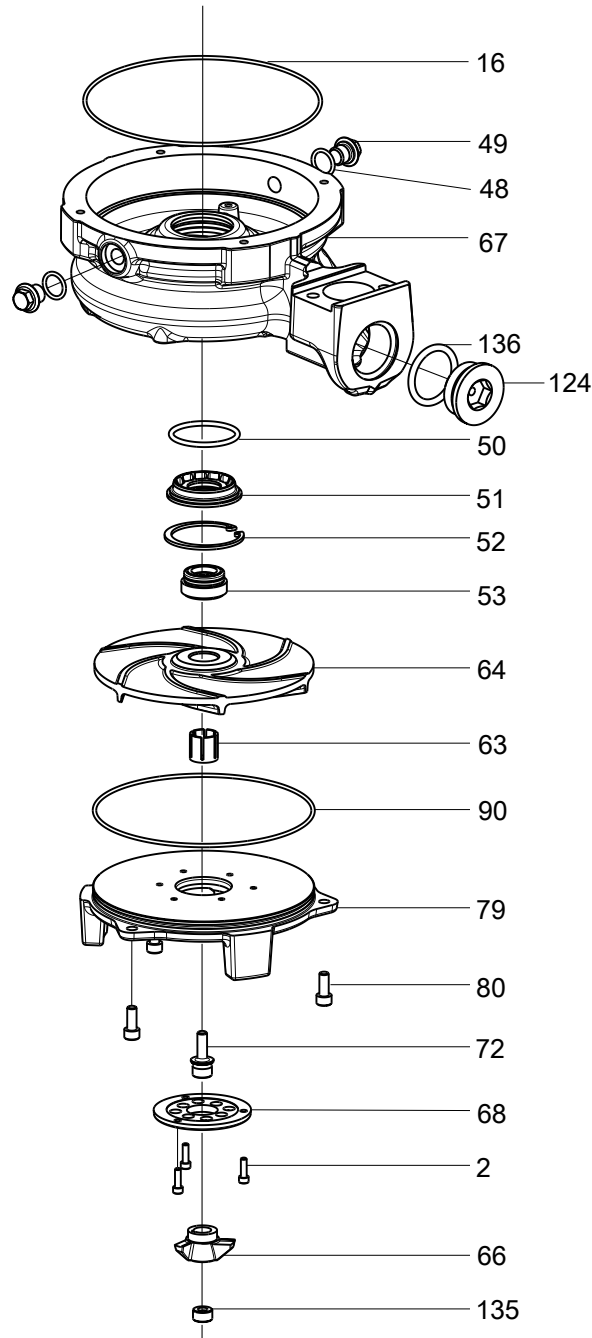


31562C

3.2 Hydraulic Unit

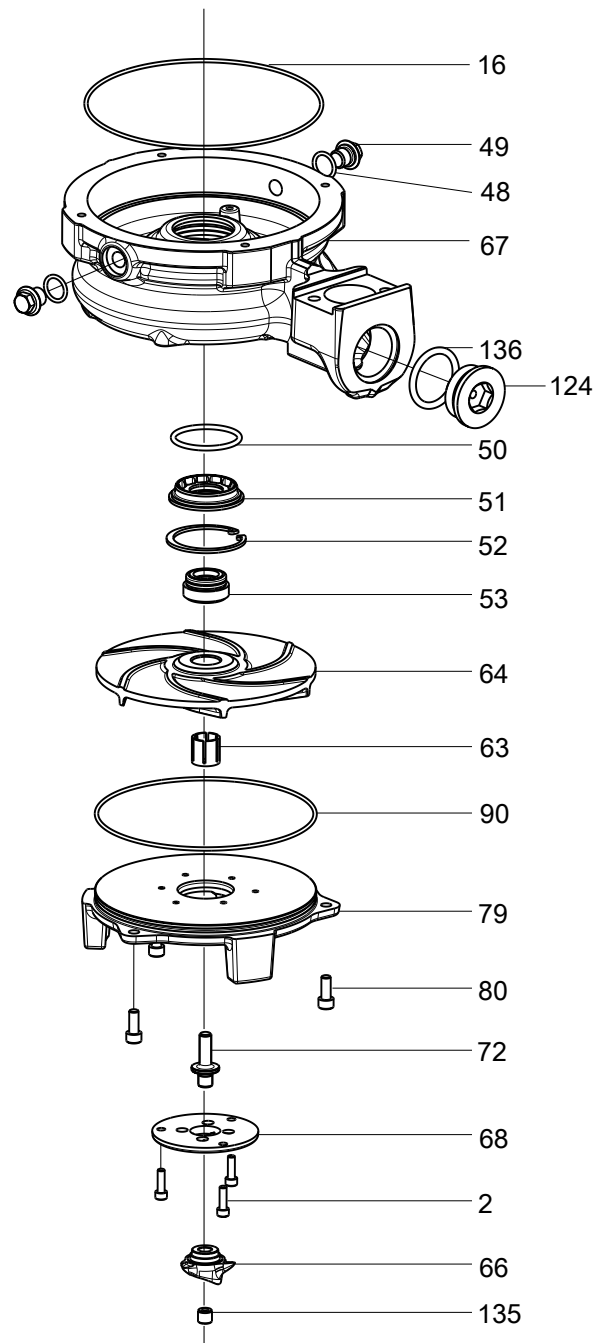
3.2.1 M_HT

M_3090 HT (50Hz)



31560

M_ 3090 HT (60Hz)



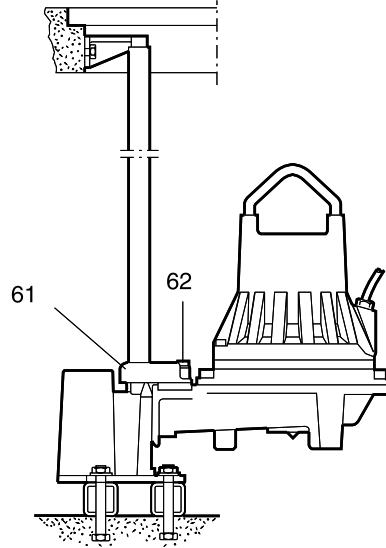
31561

3.3 Installation Components

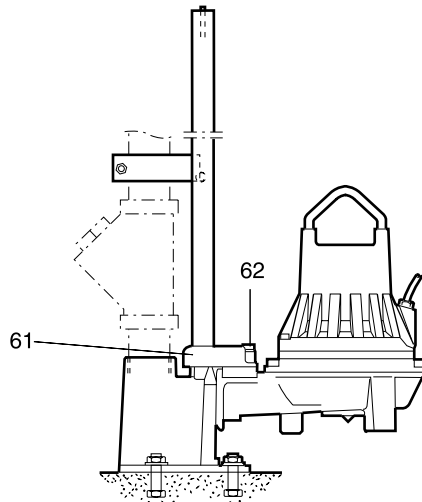
3.3.1 MP

MP 3090.170/890

Alt 1



Alt 2



31455

Pos. No	Part. No	Type	Denomination	Qty/Version	
				170	890
19	647 88 06		Stator 15-12-2b Stator 3-phase 50 Hz 2-poles 200V D P2=4,30kW Max ambient temp=40 DC Thermal contact 140 DC Stator 3-phase 60 Hz 2-poles 380V Y 220V D P2=4,10kW/5,50hp Max ambient temp=40 DC Thermal contact 140 DC	1	1
19	647 88 07		Stator 15-12-2b Stator 3-phase 60 Hz 2-poles 200V-208V D P2=4,10kW/5,50hp Max ambient temp=40 DC Thermal contact 140 DC	1	1
19	647 88 08		Stator 15-12-2b Stator 3-phase 60 Hz 2-poles 575V-600V D P2=4,10kW/5,50hp Max ambient temp=40 DC Thermal contact 140 DC	1	1
19	647 88 12		Stator 15-12-2b Stator 1-phase 60 Hz 2-poles 230V P2=2,80kW/3,70hp Max ambient temp=40 DC Thermal contact 140 DC Stator 1-phase 60 Hz 2-poles 230V P2=3,70kW/5hp Max ambient temp=40 DC Thermal contact 140 DC Stator 1-phase 60 Hz 2-poles 230V P2=4,10kW/5,50hp Max ambient temp=40 DC Thermal contact 140 DC	1	1
19	647 88 13		Stator 15-12-2b Stator 1-phase 60 Hz 2-poles 208V P2=3,70kW/5hp Max ambient temp=40 DC Thermal contact 140 DC Stator 1-phase 60 Hz 2-poles 208V P2=2,80kW/3,70hp Max ambient temp=40 DC Thermal contact 140 DC Stator 1-phase 60 Hz 2-poles 208V P2=4,10kW/5,50hp Max ambient temp=40 DC Thermal contact 140 DC	1	1
22	83 45 59		Cable tie 200X2.4 PA 6/6 -55+105	3	3
23	94 20 59		Motor cable subcab 4G2.5+2X1.5 Power cable x 1 SUBCAB 4G2,5+2x1,5 17 - 18mm L= 20m Power cable x 1 SUBCAB 4G2,5+2x1,5 17 - 18mm L= 10m	*	*
23	94 20 60		Motor cable subcab 4G4+2X1.5 Power cable x 2 SUBCAB 4G4+2x1,5 20 - 22mm L= 5m Star delta possible Power cable x 1 SUBCAB 4G4+2x1,5 20 - 22mm L= 10m Star delta possible	*	*
23	94 20 82		Motor cable subcab 7G2.5+2X1.5 Power cable x 1 SUBCAB 7G2,5+2x1,5 20 - 22mm L= 10m Star delta possible	*	*
31	439 44 01	(Ex)	Screw M14X1.25		3

Pos. No	Part. No	Type	Denomination	Qty/Version	
				170	890
32	596 07 00	(Ex)	Square washer		3
33	82 17 64		Cutting screw TAPTITE-M6X20	3	3
34	82 50 60		Sealing washer DUBO NR 301	3	3
37	504 78 07		Cable unit	1	1
38	518 89 02	(Ex)	Leakage sensor (FLS)	1	1
40	800 25 00		Bearing holder	1	
40	800 25 01	(Ex)	Bearing holder		1
41	83 30 15		Ball bearing 25X62X25.4	1	1
42	82 74 65		O-ring 59.5X3 NBR	1	1
43	594 93 00		Bearing cover	1	1
44	720 45 07		Mechanical seal AL2O3/CARBON FPM	1	1
45	82 00 15		Hex.socket hd screw M6X20-A2-70	3	3
48	82 73 90		O-ring 19.2X3 NBR	2	2
49	428 22 17		Inspection screw BRASS	2	2
50	82 77 97		O-ring 53X4 NBR	1	1
51	426 32 00		Seal ring holder	1	1
52	82 63 68		Retaining ring SGH 65-2304/1.4122	1	1
53	720 45 01		Mechanical seal AL2O3/WCCR FPM	1	1
61	464 06 00		Sliding bracket FP "LT"; BP "HT"; DP "LT"	1	1
62	83 04 53		Hex.socket hd screw M12X45-A4-80	2	2
63	722 64 00		Clamping sleeve	1	1
64	737 42 05		Impeller	1	1
			M-impeller HT 50Hz 3-phase Maximum temperature 40 DC Material Grey cast iron		
64	737 42 02		Impeller	1	1
			M-impeller HT 60Hz 1-phase Maximum temperature 40 DC Material Grey cast iron		
			M-impeller HT 60Hz 3-phase Maximum temperature 40 DC Material Grey cast iron		
			M-impeller HT 50Hz 3-phase Maximum temperature 40 DC Material Grey cast iron		
64	737 42 03		Impeller	1	1
			M-impeller HT 60Hz 1-phase Maximum temperature 40 DC Material Grey cast iron		
64	737 42 04		Impeller	1	1
			M-impeller HT 60Hz 1-phase Maximum temperature 40 DC Material Grey cast iron		
66	638 81 01		Cutting wheel	1	1
			M-impeller HT 50Hz 3-phase Maximum temperature 40 DC Material Grey cast iron		
66	82 95 48		Cutting wheel	1	1
			M-impeller HT 60Hz 1-phase Maximum temperature 40 DC Material Grey cast iron		
			M-impeller HT 60Hz 3-phase Maximum temperature 40 DC Material Grey cast iron		

Pos. No	Part. No	Type	Denomination	Qty/Version	
				170	890
67	740 27 03		Pump housing	1	1
67,124	82 71 17		Plug DIN 908 G 1 1/2 A FZB	1	1
67,136	82 74 01		O-ring 44.2X5.7 NBR	1	1
68	638 82 00		Cutting ring 1.4535 HARDENED TO 58HRC M-impeller HT 50Hz 3-phase Maximum temperature 40 DC Material Grey cast iron	1	1
68	82 95 47		Cutting ring M-impeller HT 60Hz 1-phase Maximum temperature 40 DC Material Grey cast iron M-impeller HT 60Hz 3-phase Maximum temperature 40 DC Material Grey cast iron	1	1
72	740 29 01		Adjustment screw M-impeller HT 50Hz 3-phase Maximum temperature 40 DC Material Grey cast iron	1	1
72	740 32 00		Adjustment screw M-impeller HT 60Hz 1-phase Maximum temperature 40 DC Material Grey cast iron M-impeller HT 60Hz 3-phase Maximum temperature 40 DC Material Grey cast iron	1	1
73	811 62 50		Adjustment washer	1	1
79	740 28 01		Suction cover	1	1
80	82 00 32		Hex.socket hd screw M8X20-A2-70	3	3
90	82 78 42		O-ring 184.5X3 NBR	1	1
111	505 43 00		Nipple NPT 1 1/2	1	1
135	740 31 01		Set screw M-impeller HT 50Hz 3-phase Maximum temperature 40 DC Material Grey cast iron	1	1
135	84 69 59		Set screw M12X16-A2 M-impeller HT 60Hz 1-phase Maximum temperature 40 DC Material Grey cast iron M-impeller HT 60Hz 3-phase Maximum temperature 40 DC Material Grey cast iron	1	1
169	667 40 00		Sticker	2	2
170	718 05 00		Sticker CUT HAZARD	1	1
215	82 40 61		Plain washer 24.5X35X2-A2-70	1	1
216	84 17 93		Seal sleeve (16)-18 MM NBR	1	1
216	84 17 95		Seal sleeve (20)-22 MM NBR	1	1
217	678 58 18	(Ex)	Cable clip 16-(18) MM	1	1
217	678 58 22	(Ex)	Cable clip 20-(22) MM	1	1
232	397 81 00	(Ex)	Gland screw Pr 37	1	1
234	82 17 61		Cutting screw TAPTITE-M6X12	1	1
235	83 43 58		Cable lug UL/CSA 1.04-2.62 MM2 M6	1	1
235	83 42 96		Cable lug 2.5-6 MM2 M6	1	1
236	83 42 65		Terminal block 600V/20A UL	5	5
236	83 42 67		Terminal block 600V/20A UL	1	1

Pos. No	Part. No	Type	Denomination	Qty/Version	
				170	890
236	83 42 65		Terminal block 600V/20A UL	2	2
236	83 42 67		Terminal block 600V/20A UL	3	3
236	83 42 65		Terminal block 600V/20A UL	8	8
236	83 42 65		Terminal block 600V/20A UL	6	6
236	83 42 65		Terminal block 600V/20A UL	3	3
250	82 17 64		Cutting screw TAPTITE-M6X20	4	4
800	85 00 50		O-ring kit	1	1
900	727 26 01		Basic repair kit	1	1
901	90 17 52		Oil ISO VG 32	1	1



ООО «Бауманс Груп» - официальный партнер фирмы Flygt в России.

Тел: +7 495 121 49 50

Эл. почта: info@baumgroup.ru

Сайт: www.baumgroup.ru